

Azure-student

servizi offerti

Per quanto riguarda i servizi, **Microsoft Azure per DreamSpark** consente di iniziare a utilizzare i servizi necessari per lo sviluppo nel cloud, a **costo zero**, utilizzando **Visual Studio Community 2015**, tra cui:

- App mobili di Azure
- Un database SQL e MySQL
- Le app Web di Azure App Service
- Visual Studio Online

per accedere:

<https://portal.azure.com/>

un account microsoft ad esempio zicstefbua@live.com (microsoft da registrarsi) e relativa password.

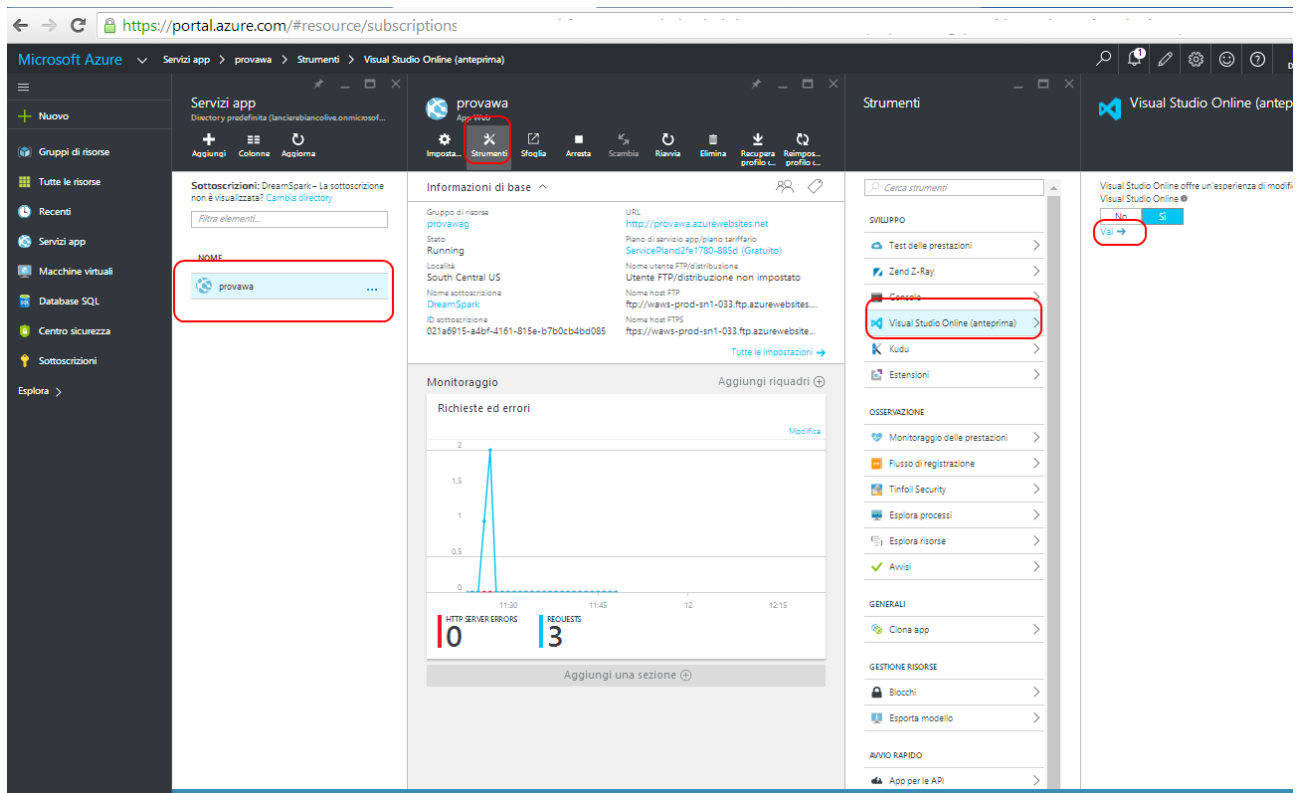
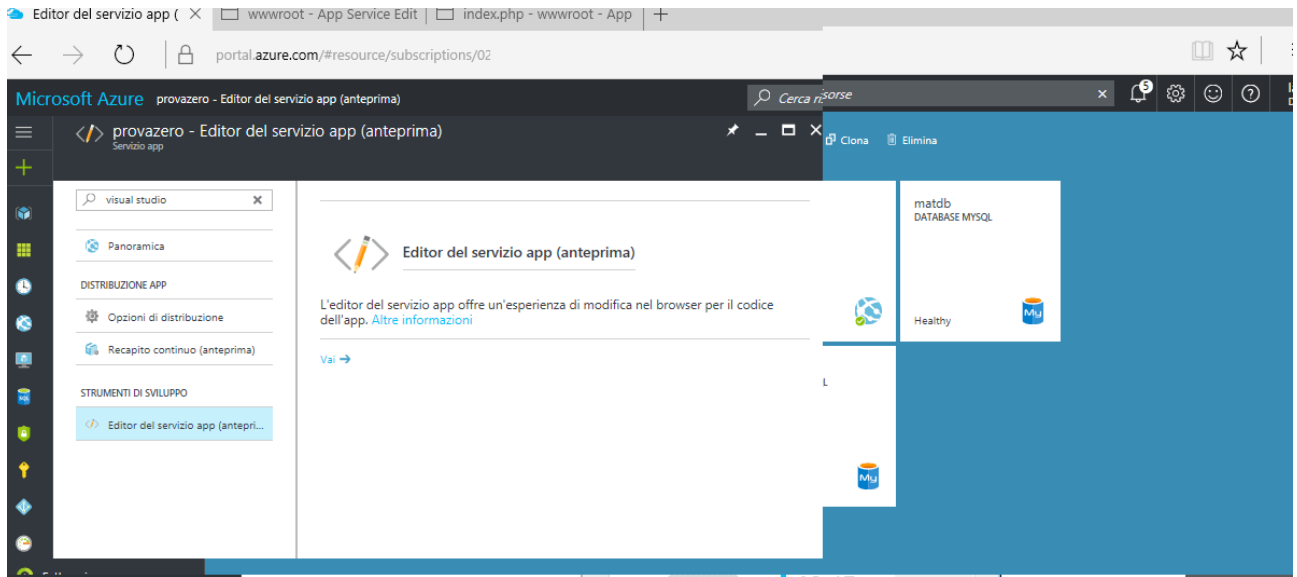
studenti per azure Dreamspark

<https://www.dreamspark.com/Product/Product.aspx?productid=99&wa=wsigin1.0>

The screenshot displays the Microsoft Azure portal dashboard. The top navigation bar includes the 'Microsoft Azure' logo, a search bar, and utility icons. The left sidebar contains a navigation menu with options like 'Nuovo', 'Gruppi di risorse', 'Tutte le risorse', 'Recenti', 'Servizi app', 'Macchine virtuali', 'Database SQL', 'Centro sicurezza', 'Sottoscrizioni', 'Azure Active Directory', and 'Monitoraggio'. The main content area is titled 'Dashboard' and features several widgets: 'Tutte le risorse' (listing resource groups like provazero, provawa, ServicePlan2fe1780-, matdb, provaDB, provawa, and provazero), 'Integrità del servizio' (showing a world map with service health indicators), 'provawa APP WEB' (Running), 'matdb DATABASE MYSQL' (Healthy), 'Marketplace', 'Guida e supporto', and 'provaDB DATABASE MYSQL' (Healthy). At the bottom, a file upload dialog is open, showing a progress bar at 0,08% and a file size of 20.97 MB. A smaller dialog shows a file size of 49.15 KB with 'OK', 'Clear', and 'Cancel' buttons.

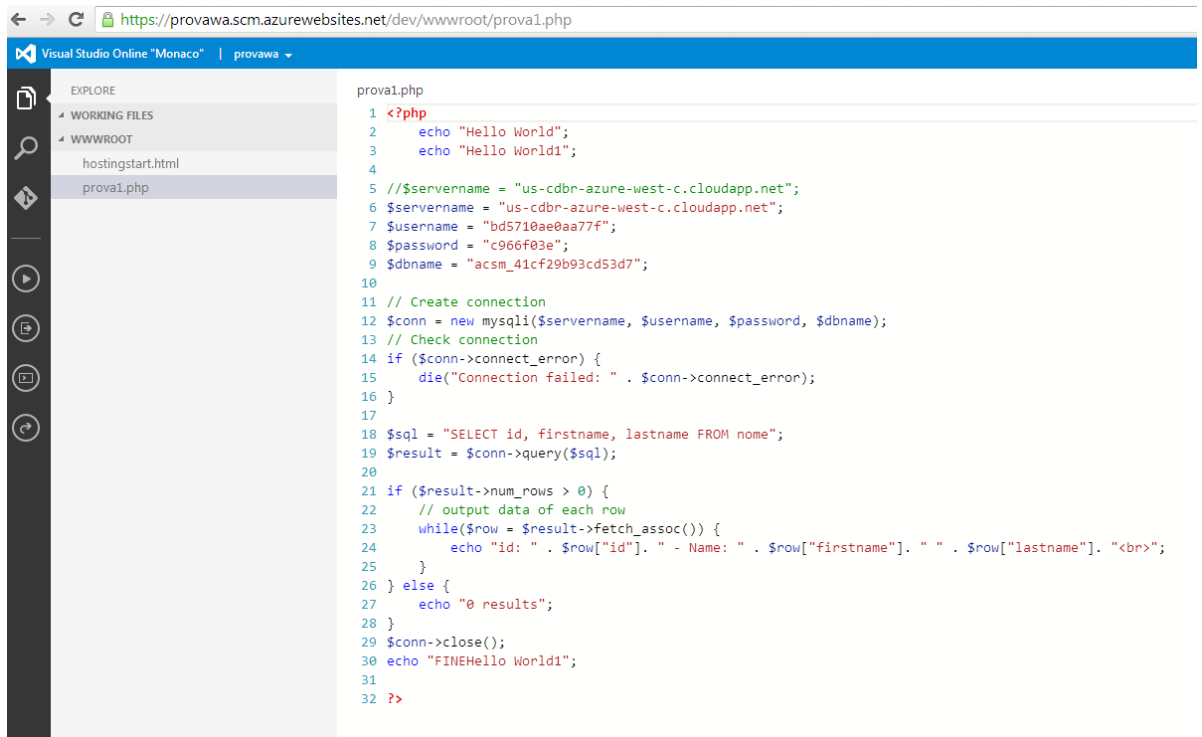
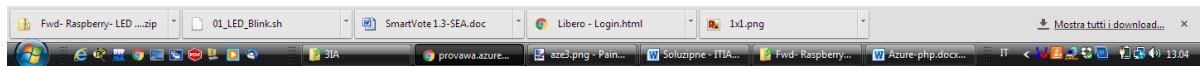
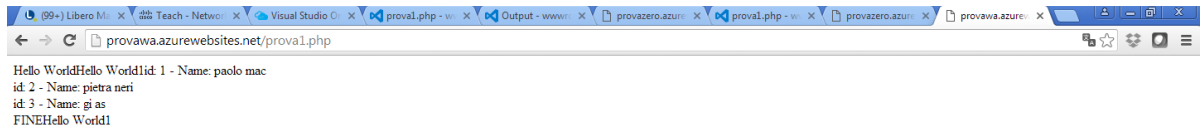
ESEMPI

Edit con visualstudio online



Lancio Due modalità

1. Aggiungere all'url il path per il file: nomesito.net/prova1.php
es,. Modalità 1 per provaaw direttamente: <http://provawa.azurewebsites.net/prova1.php>



← → C provazero.azurewebsites.net/index.php

PHP Form Validation Example

Name:

E-mail:

Website:

Comment:

Gender: Female Male

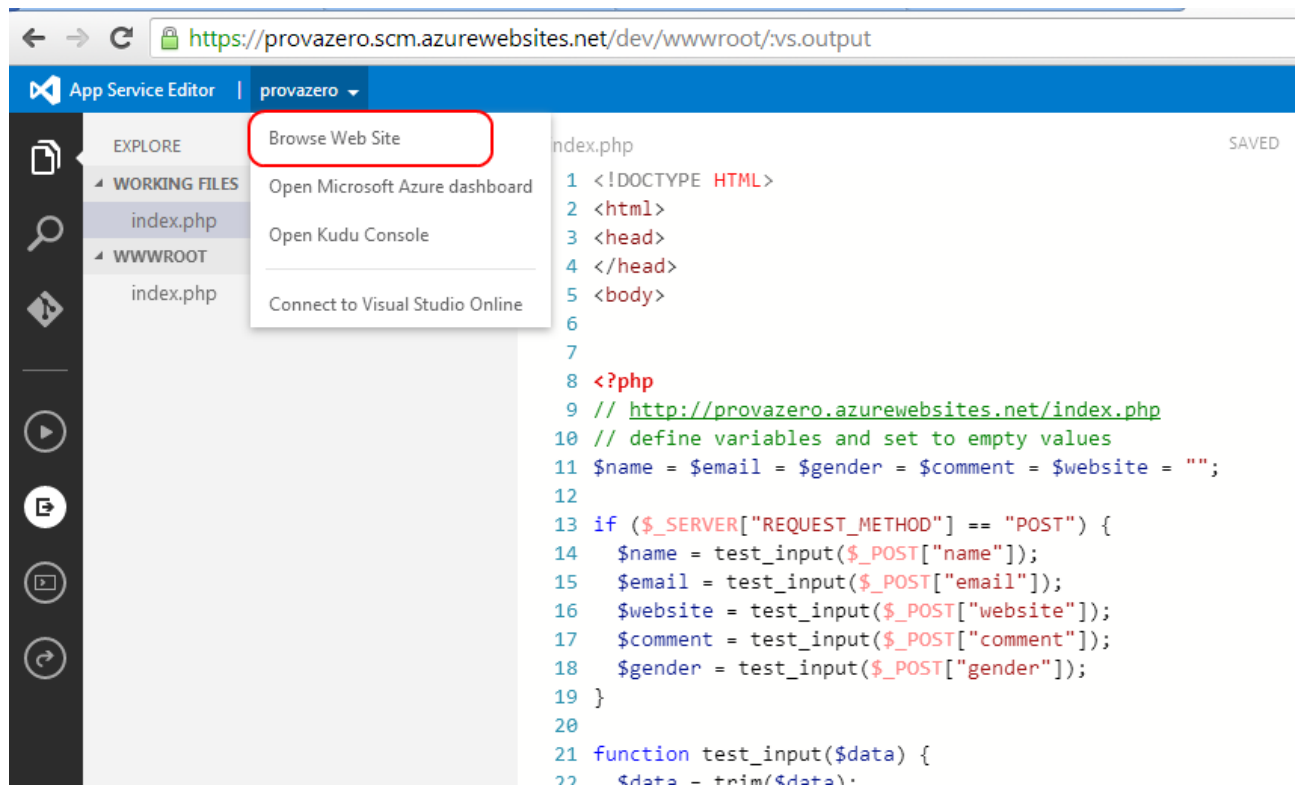
Your Input:

2. Se vuole accedere direttamente a quella pagina elimini quella "hostingstart" e rinomina la sua in `index.php`

Ex. Per PROVAZERO (con eliminazione "hostingstart" e rinomina del file php in `index.php`) :
<http://provazero.azurewebsites.net/index.php>

<http://provawa.azurewebsites.net/prova1.php>

- 3.



```
<?php
```

```
    echo "Hello World";
```

```
    echo "Hello World1";
```

```
//http://provawa.azurewebsites.net/prova1.php
```

```
$servername = "us-cdbr-azure-west-c.cloudapp.net";
```

```
$username = "bd57....";
```

```
$password = "xxxxxx";
```

```
$dbname = "acsm_41xxxx";
```

```
Database=acsm_41xxxx;Data Source=us-cdbr-azure-west-c.cloudapp.net;User Id=bd57...;Password=xxxxxx
```

```
// Create connection
```

```
$conn = new mysqli($servername, $username, $password, $dbname);
```

```
// Check connection
```

```
if ($conn->connect_error) {
```

```
    die("Connection failed: " . $conn->connect_error);
```

```
}
```

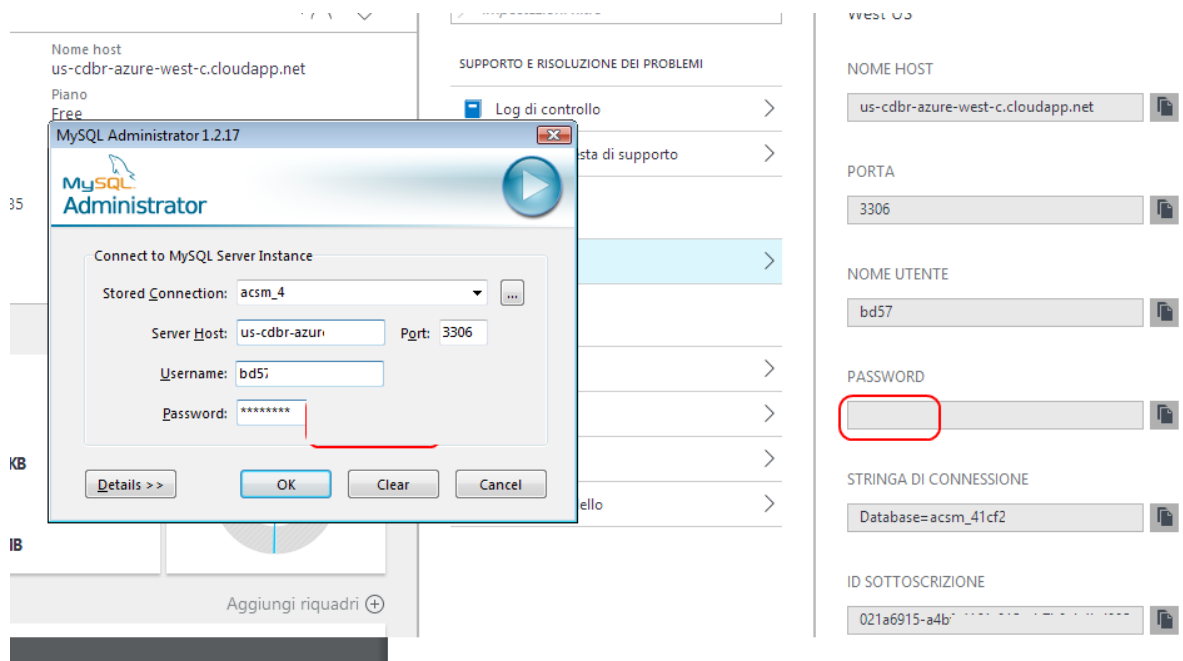
```
$sql = "SELECT id, firstname, lastname FROM nome";
```

```
$result = $conn->query($sql);
```

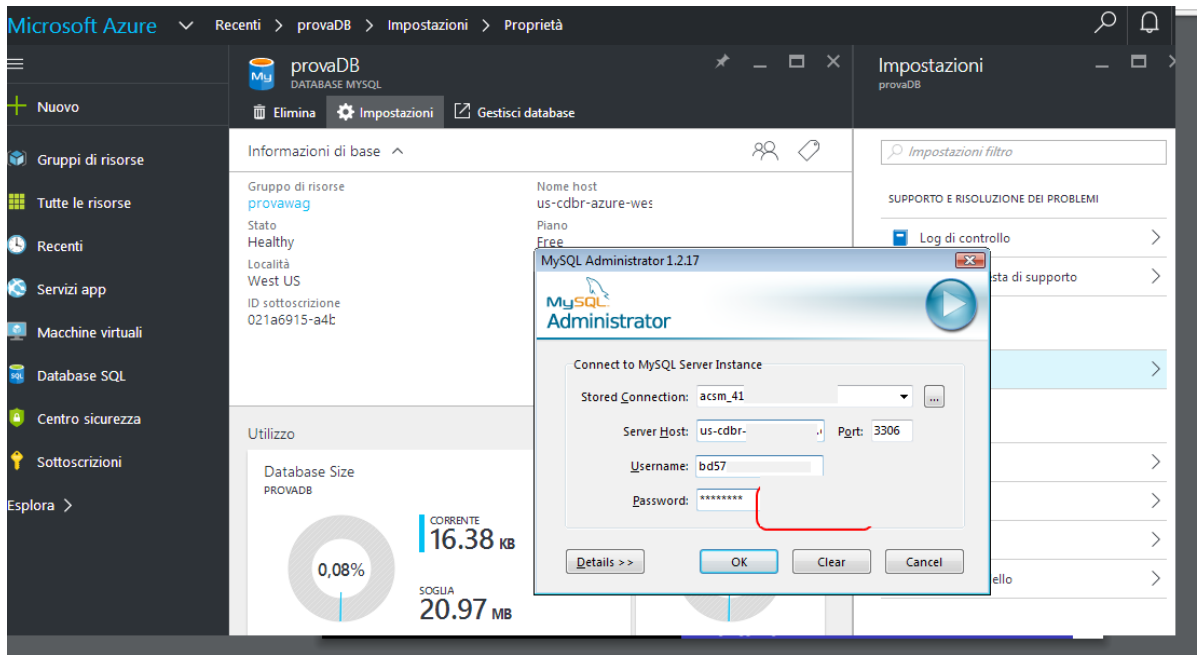
```

if ($result->num_rows > 0) {
    // output data of each row
    while($row = $result->fetch_assoc()) {
        echo "id: " . $row["id"]. " - Name: " . $row["firstname"]. " " . $row["lastname"]. "<br>";
    }
} else {
    echo "0 results";
}
$conn->close();
echo "FINEHello World1";
?>

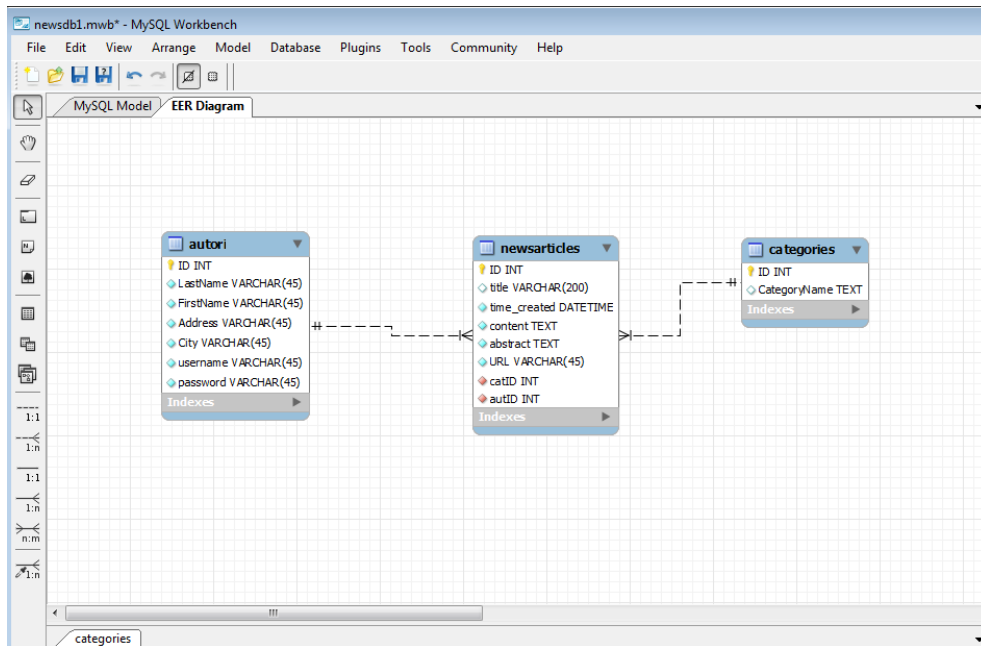
```



MySQL Server Information



Un esempio AZURE : PROVA con matDB



<https://www.mysql.it/products/workbench/>

<https://www.youtube.com/watch?v=RSHevYMwCVw>

The screenshot shows the Microsoft Azure portal interface. The main content area displays the configuration page for the 'matdb' MySQL database instance. The instance is in a 'Healthy' state and is located in the 'West Europe' region. The database size is currently 49.15 KB, with a quota of 20.97 MB. The usage is shown as 0.08%. The page includes a sidebar with navigation options like 'Nuovo', 'Gruppi di risorse', and 'Database SQL'. The top navigation bar shows 'Recenti > matdb > Impostazioni'. The right sidebar contains 'SUPPORTO E RISOLUZIONE DEI PROBLEMI' and 'Log di controllo'.

<http://provazero.azurewebsites.net/matdb.php>

<https://provazero.scm.azurewebsites.net/dev/wwwroot/matdb.php>